

# Welcome Back!

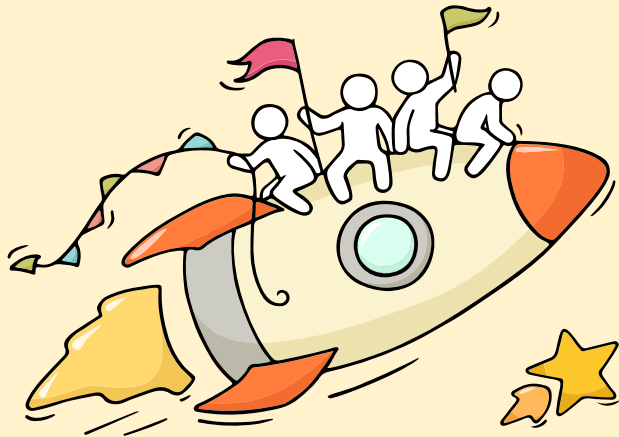
Release of 2023 N-Level Results



## A.C.E the year

- **A**nticipate what's to come
- **C**are for yourself and others
- Stay **E**ngaged and **E**mbrace challenges

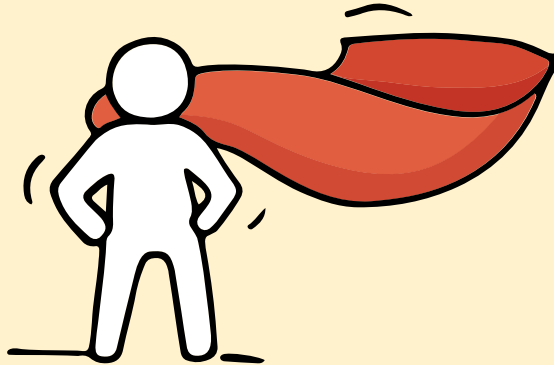
You have worked hard to reach this stage. Let's celebrate your efforts!



*Finally, we are going to get our results!*



Remember that while **everyone's educational journey is different,**  
**we can each have a fulfilling outcome!**

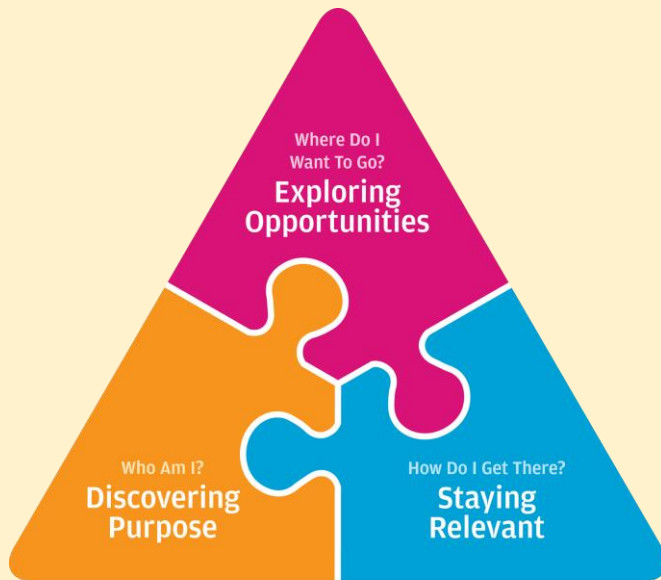


# Thinking about Your Next Step?

Consider these questions!

Where do I want to go?

Who am I?



How Do  
I Get There?

# Resources to help you make informed decisions



## MySkillsFuture Student Portal

A one-stop portal that empowers you to embark on a journey of self-discovery and make informed education and career choices.

Use the information and tools to explore various education and career pathways and take charge of your future.

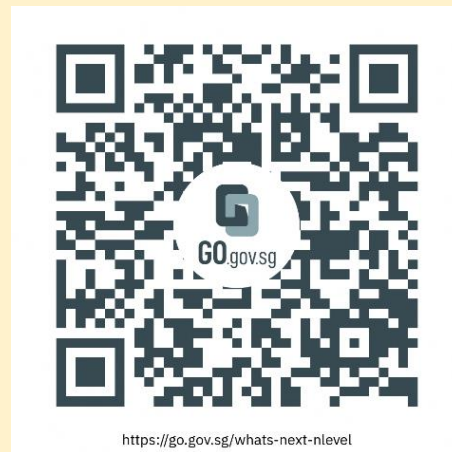
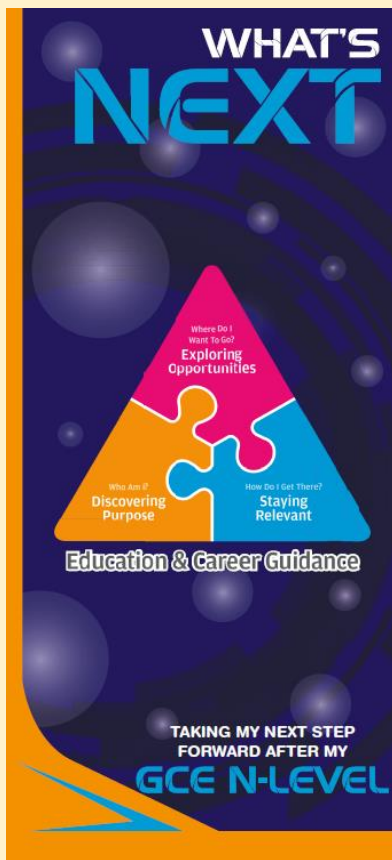
*Where can we find more information?*



<https://go.gov.sg/mySFsec>



# Resources to help you make informed decisions



<https://go.gov.sg/whats-next-nlevel>

# Resources to help you make informed decisions

## Post-Secondary Education

Learn more about the admissions exercises and programmes



<https://moe.gov.sg/post-secondary/admissions>

Learn more about the post-secondary education institutions



<https://moe.gov.sg/post-secondary/overview>



# Resources to help you make informed decisions

Explore different jobs and industries with On My Way (OMW). Find out if your career goal and educational pathway match your interests, values and ambitions. <https://www.nyc.gov.sg/omw/home>



## KNOW IT ALL

provides consolidated information about different jobs and industries - key responsibilities, skills, career paths and more!



## DAY IN THE LIFE

takes you into the lives of different professionals and give you a glimpse of their jobs and what it entails through the medium of videos.



## TASTER PROGRAMMES

are micro-experiences of different job roles that allow you to get a taste of working life and help you decide what to study to achieve your career aspirations!



# Concerned about your next steps?

**Stop**

- Calm yourself down. Take a few deep breaths.

**Think**

- Think through the different options that are available for you. Keep things in perspective.
- Remember that the N-Level is one part of your life journey and not the destination.

**Do**

- Approach a trusted adult and seek his/her help. Have a conversation with this person about what would be best for you.
- Make a decision and take action based on your options.

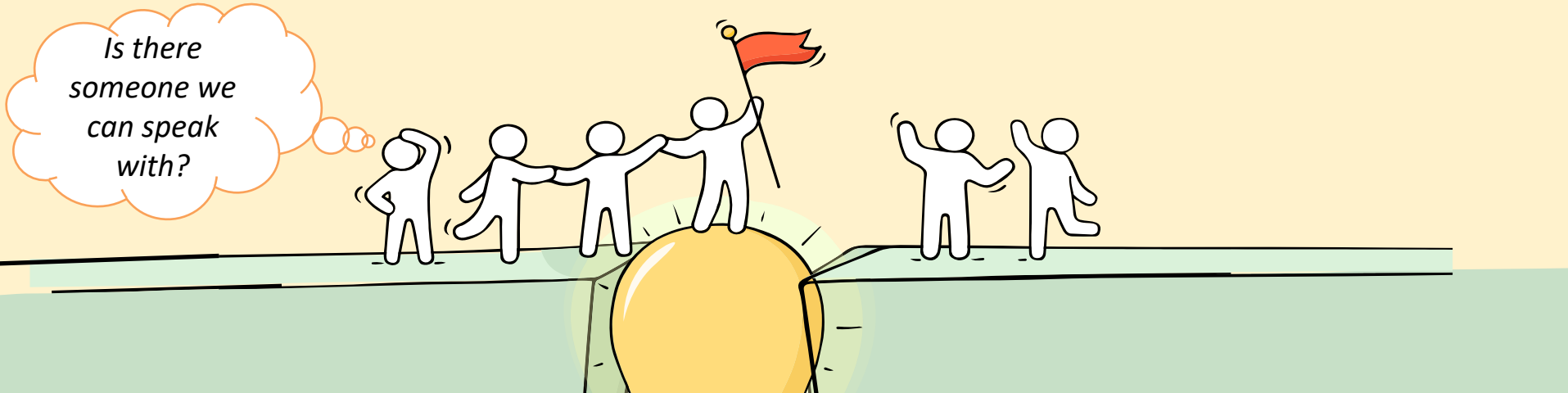
**When you receive your results, you may experience a range of emotions.**

**Managing these emotions well will allow you to stay calm and make rational decisions.**

# Reaching out for help is a sign of strength!

## Continue to **care** for one another

If you have any questions about your options or are not coping well, do reach out to someone you trust and speak with them. It could be a **parent/guardian, teacher, ECG Counsellor, School Counsellor or a friend that you can talk to.** We are here for each other.



# Provision of Education & Career Guidance (ECG) Services

- You can seek help from:
  - Your teachers or Mr Tan Chee Tiong
  - Ms Zen, our ECG counsellor
- After you receive your results, you can approach [Ms Zen for advice @ Lighthouse](#) (besides ITR2) on **18 & 19 Dec.**
- Book appointment via class mentor



Ms Zen

# Keep a lookout for some of these signs in your peers or in yourself

*How can we  
support one  
another?*



**D**

Deliberately avoiding others

**I**

Increased irritability, restlessness, agitation, stress and anxiety

**S**

Sending or posting moody messages on social media

**T**

Talking about death or dying

**R**

Reacting differently or gradually losing interest in things they used to like

**E**

Eating more than usual or having a much reduced appetite

**S**

Sleep pattern changes with difficulty falling asleep or oversleeping

**S**

Slowing down of energy levels

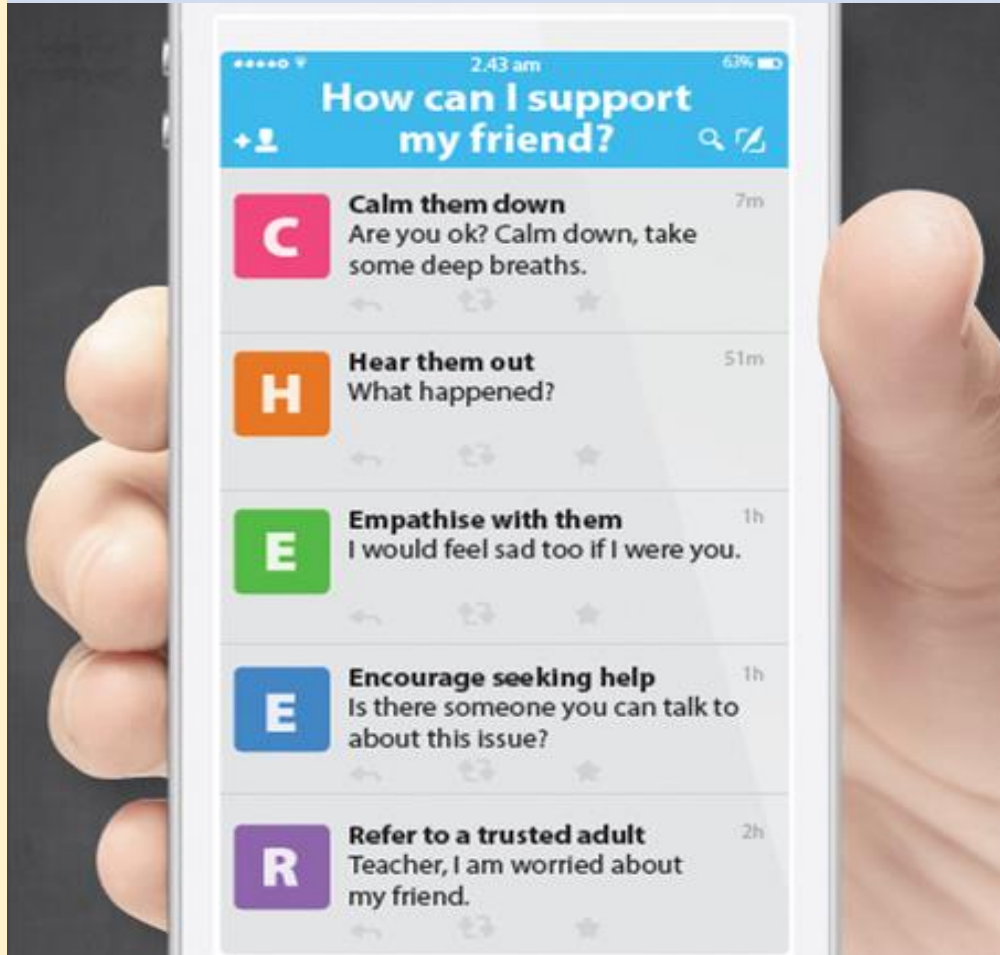
If you notice any of these signs in yourself or your friends,  
**have a chat with your school counsellor or teacher**  
Or contact SOS 24-hour hotline at **1-767** or **1800-221-4444**

# Supporting Your Friend

We may each experience different emotions upon receiving the results. You can share your friends' joy by congratulating them or give words of encouragement to friends who may be disappointed with their results.



Keep a lookout for your friends in distress. You can support them in the following ways:



There are other hotlines and chats available if you are more comfortable seeking help using these platforms. Scan the QR code below for a helpful resource.



**SOS** provides round-the-clock emotional support for those in distress, thinking of suicide or affected by suicide.

Call: **1767**  
(24-hour helpline)

Whatsapp: **9151 1767**  
(24-hour Care Text)

**Community Health Assessment Team (CHAT)** provides personalised and confidential mental health checks and consultation for youths. To speak with a youth support worker, you can:

Visit: **CHAT Hub at \*SCAPE, #05-05**  
Call: **6493 6500/ 6501**  
Email: **CHAT@mentalhealth.sg**

**mindline.sg** is an online platform that provides tools, tips and resources to help you manage your health and well-being. Find out more at:  
**www.mindline.sg**



**TOUCHline** is a helpline to provide youths with emotional support and practical advice.

Call: **1800-377 2252**  
Monday- Friday (Excluding Public Holidays):  
9am – 6pm

**Carey** is an online platform by Care Corner that provides free mental health check-ins with mental health professionals. Find out more at:  
**<https://carey.carecorner.org.sg/>**

**ec2** is an e-Counselling Centre where you can talk to a trained counsellor about the issues you are facing, right where you are.

Chat with a counsellor at:  
**www.ec2.sg**  
Monday – Friday (Excluding Public Holidays):  
10am – 12pm & 2pm – 5pm



**The N-Level  
examination is not  
the destination.**

**It is part of your  
education journey.**

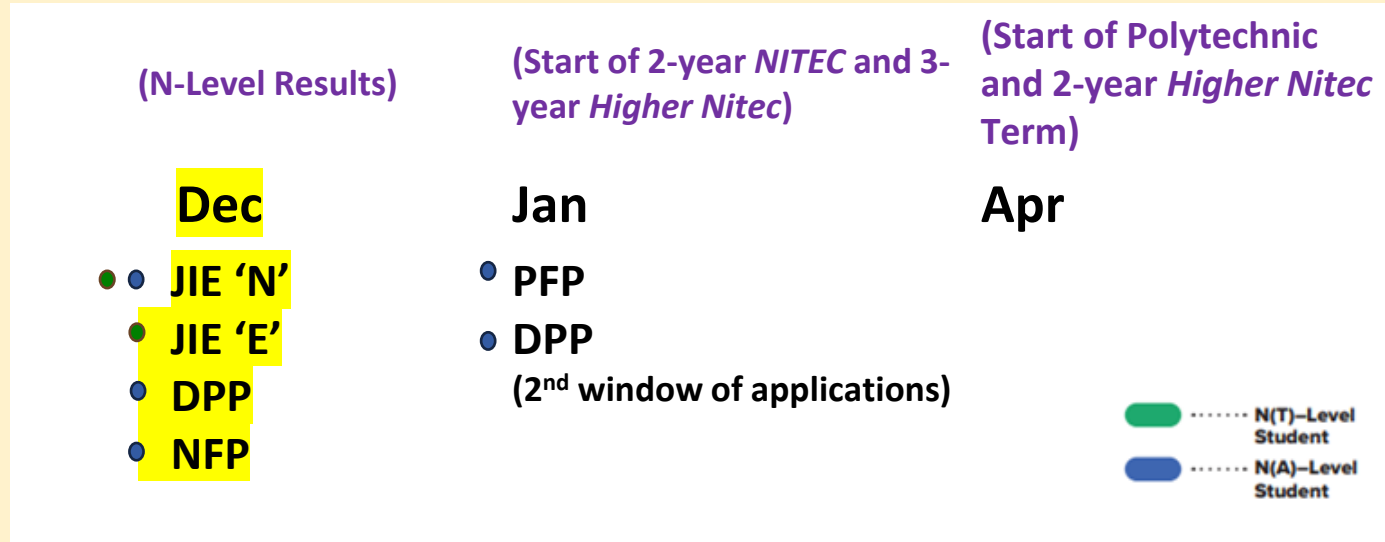


# Admissions Exercises

Things to note



# Admissions Exercises Application Timeline



# JUST-IN-TIME INFORMATION on JIE APPLICATION (Jan 2024 intake) For N(A)\* and N(T) School Leavers

**\*Applicable for N(A) students progressing to ITE**

**Briefing Slides for Students**

A PRESENTATION BY  
MINISTRY OF EDUCATION, SINGAPORE

# Key Dates for Jan 2024 Intake Exercise (Full-time Nitec Courses)

Key Activity	Period for 2-Year and 3-Year Nitec Courses, and 3-Year and 4-year Higher Nitec courses	Remarks
<b>1st Phase (Main Phase)</b>		
Application	18 Dec 2023 (2.30pm) to 21 Dec 2023 (5pm)	Apply through the Internet at <a href="https://www.ite.edu.sg">https://www.ite.edu.sg</a> with NRIC / FIN and Date of Birth. You may also apply using SingPass.
Release of Results	29 Dec 2023 at 9am	Check results at <a href="https://istudent.ite.edu.sg">https://istudent.ite.edu.sg</a> with web ID and password
Acceptance of Course Offer Period	29 Dec 2023 to 3 Jan 2024	Accept course offer at <a href="https://istudent.ite.edu.sg">https://istudent.ite.edu.sg</a> with web ID and password
<b>2nd Phase (Late Application/Appeal Phase)</b>		
Application	29 Dec 2023 to 3 Jan 2024	Apply through the Internet at <a href="https://istudent.ite.edu.sg">https://istudent.ite.edu.sg</a> with NRIC / FIN and Date of Birth. You may also apply using SingPass.
Release of Results	10 Jan 2024 at 9am	Check results at <a href="https://istudent.ite.edu.sg">https://istudent.ite.edu.sg</a> with web ID and password
Acceptance of Course Offer Period	10 Jan 2024 to 12 Jan 2024	Accept course offer at <a href="https://istudent.ite.edu.sg">https://istudent.ite.edu.sg</a> with web ID and password
<b>3rd Phase (Final Top-up Phase)</b>		
Application	1 <sup>st</sup> Top-up Phase Application - 10 Jan to 18 Jan 2024 2 <sup>nd</sup> Top-up Phase Application - 24 Jan to 7 Feb 2024	Apply through the Internet at <a href="https://istudent.ite.edu.sg">https://istudent.ite.edu.sg</a> with NRIC / FIN and Date of Birth. You may also apply using SingPass.
Release of Results	1 <sup>st</sup> Top-up Phase - 15 Jan to 24 Jan 2024 2 <sup>nd</sup> Top-up Phase - 24 Jan to 14 Feb 2024	Check results at <a href="https://istudent.ite.edu.sg">https://istudent.ite.edu.sg</a> with web ID and password
Acceptance of Course	1 <sup>st</sup> Top-up Phase - 15 Jan to 24 Jan 2024	Accept course offer at <a href="https://istudent.ite.edu.sg">https://istudent.ite.edu.sg</a> with web ID and

# Information For Students on Key Dates for Jan 2024 intake

1. All N(A)\* /N(T) school leavers are encouraged to put in an application during the **1<sup>st</sup> Phase (Main Phase)** between **18 Dec 2023 (2.30pm) to 21 Dec 2023 (5pm)**. Application results for the 1<sup>st</sup> Phase will be released on **29 Dec 2023 at 9am**.
1. If you **wish to appeal**, please **accept the course offered before applying in the 2<sup>nd</sup> Phase (Late Application/Appeal Phase)** between **29 Dec 2023 to 3 Jan 2024**. The application results for the 2<sup>nd</sup> Phase will be known on **10 Jan 2024 at 9am**.
1. Unsuccessful applicants can appeal under the **3<sup>rd</sup> Phase (Final Top-up Phase)** between **10 Jan to 18 Jan 2024 and 24 Jan to 7 Feb 2024** for courses with vacancies. The application results for the 3<sup>rd</sup> Phase will be known between **15 Jan to 24 Jan 2024** and **24 Jan to 14 Feb 2024**.

\*N(A) students progressing to ITE

For further enquiries, N-Level school leavers can  
contact

ITE Hotline: 1800-2222-111

# Key Pointers for Students on ITE's Joint Intake Exercise (JIE) for Admission to Nitec Courses

ALL N(T) students and N(A) students (who are not progressing to 5N(A) or repeating 4N(A)) are eligible for JIE.

Keen competition for Nitec and Higher Nitec courses, so use all 12 choices wisely!

Participation in Main Phase is key to secure a place in ITE!

If you are keen in the work & learn option, you may consider applying for the ITE Traineeship programme. Do apply in the Main Phase to avoid missing a place in ITE!

If you are unsuccessful in EAE, make sure you apply in Main Phase to avoid missing a place!

If you have received an additional letter, then you are eligible for the Enhanced Foundation Programme.

If you are eligible for EFP, make sure you apply for the 2-year Nitec and 3-year Higher Nitec first before applying for EFP!

The EFP helps to build the necessary literacy and numeracy foundations that will enable you to successfully complete your Nitec course!

If you are counter-offered a course, accept it first before appealing for another course you may be more interested in!

## STEP-BY-STEP INFORMATION FOR JIE APPLICATION

# Online Application for

2-Year Nitec and 3-Year  
Higher Nitec Courses

3-Year Nitec/4-year Higher Nitec  
Course with EFP  
(for N(T) courses with 0, 1 pass)

1. Go to <https://www.ite.edu.sg>.

2. Click



icon.

3. Under JIE 'N', click **Apply Now** icon to link to the application website

Under JIE 'E', click **Apply Now** icon to link to the application website

4. At the application website:

- a) Enter NRIC / FIN and Date of Birth to start application. You may also apply using SingPass.
- b) Upon completion of application, applicants will receive their **web ID** and password.

## STEP-BY-STEP INFORMATION FOR JIE APPLICATION

# Checking of Posting Results/Accept Course Offer

2-Year Nitec and 3-Year  
Higher Nitec Courses

3-Year Nitec/4-year Higher Nitec  
Course with EFP  
(for N(T) courses with 0, 1 pass)

1. Go to <https://istudent.ite.edu.sg>.
2. Enter **web ID** and password.
3. Click '**Self-Service**' followed by '**Student Admission**' followed by '**View Application Results**' to view the application results and to accept course offer.

The above steps applies to all phases (refer to [Slide 9](#) for dates).

For more details, please refer to ITE Admission Booklet.



## RESOURCES FOR STUDENTS

# Additional Information For Students


Should you require further advice or assistance in your applications or future plans, please contact your teachers and ECG Counsellor.

For further inquiries, you may refer to the following hotlines and links for more information and advice on further education:

Institute of Technical Education (ITE)	
ITE Hotline (for ITE admissions and courses)	1800 2222 111 <a href="mailto:training@ite.edu.sg">training@ite.edu.sg</a>
Education and Career Guidance (ECG)	
ECG Centre @ MOE	<u>6831 1420</u> <a href="mailto:MOE_ECG@moe.gov.sg">MOE_ECG@moe.gov.sg</a> e-Appointment: <a href="https://go.gov.sg/moe-ecg-centre">https://go.gov.sg/moe-ecg-centre</a>

# Additional Information For Students

The information listed in the table below will help you to make an informed decision on which choice of courses you could consider applying at ITE.

S/N	Information	Attachment/Link
1	ITE Factsheet 2023	 JIEN2023 Factsheet
2	ITE Course Booklet 2024	<a href="https://for.edu.sg/ite-course-booklet-2024">https://for.edu.sg/ite-course-booklet-2024</a>
3	ITE Traineeship Courses	<a href="https://www.ite.edu.sg/courses/traineeship-courses">https://www.ite.edu.sg/courses/traineeship-courses</a> .
4	Information on Progression Opportunities (From <i>Nitec</i> Courses to <i>Higher Nitec</i> and Technical Diploma Courses)	<a href="https://www.ite.edu.sg/admissions/full-time-courses/nitec/progression-opportunities">https://www.ite.edu.sg/admissions/full-time-courses/nitec/progression-opportunities</a>
5	Information on Graduate Employment Survey	<a href="https://www.ite.edu.sg/admissions/graduate-employment-survey">https://www.ite.edu.sg/admissions/graduate-employment-survey</a>

# QTSS Computer Facility

- 18 Dec (Mon) : From 2:30 pm to 4 pm, Com Lab 1 & Com Lab 2
- 19 Dec (Tue) to 21 Dec (Thu): From 9 am to 4 pm, Com Lab 1

# Change in Last Grade (From 2023)

	GCE Examination (Prior to 2023)	GCE N(A)-Level Examination (From 2023)	GCE N(T)-Level Examination (From 2023)
Last Grade	U	6	E

# Computing Aggregate Scores

For N(T), N(A) students who sat for O level subjects for use for promotion to Sec 5N(A), retention in 4N(A), lateral transfer or progression to ITE courses.

School O-Level Prelim Grade	N(A)-Level Grade	N(T)-Level Grade
A1, A2, B3	1	A
B4, C5, C6	2	A
D7	3	A
E8	4	B
9	5	C
-	6	D
-	-	E

Important Slide

# Conversion of Grades for 4NA students taking OOS subjects (For DPP Application)

School O-Level Prelim		N(A)-Level	
Mark	Grade	Mark	Grade
65-100	A1, A2, B3	75-100	1
50-64	B4, C5, C6	70-74	2
45-49	D7	65-69	3
40-44	E8	60-64	4
0-39	9	50-59	5
		0-49	6

## Take Note:

Important Slide

- 4N(A) students who took GCE O-Level examination subjects in 2023 may combine your grades from this examination with your N(A)-Level results to apply for the DPP

# Appeal for Review of Results

- Consult Subject Teacher – ensure there is a strong ground before filing an appeal.
- Approach General Office to submit application by **21 Dec 2023 (Thu)**
- Please note that the fee per subject is **\$112.35**

# Repeat 4NA in 2023

- Consult your CMs
- Make appointment to Vice-Principal (Mrs Yue) with your parents/ guardians
- Submit application form to GO ***latest by*** **20 Dec 2023 (Wed)**.
- **Apply to ITE first by 21 Dec 2023 (5pm)** (*in case your application to repeat Sec 4NA is not successful*)



# Certificate Amendment

1. Candidates may request for a re-print of their certificate only if their name were printed wrongly due to misspelling.
2. There will be an amendment fee of \$50 for each certificate that require a re-print.
3. Request and payment must be submitted through school to SEAB by 21 Dec 2023.

# **2023 GCE N Levels Results Release**

**18 December 2023**



# CONTENT OF SHARING

1. Progression Pathway Options after N levels Exams
2. 2023 GCE 'N' Level Results



# Progression Pathway Options after GCE N Level Exams

- There are **many routes to success**.
- Explore and **be opened** to all possible education options and look for one that **best fits** your strengths, interests, abilities and passion.
- Make an informed decision and **work towards your dreams**.



**For Sec 4 students in  
Normal (Academic) course**



# Progression Pathway options for Sec 4N students

4 N(A)

ELMAB3  $\leq 12^*$ :

Polytechnic  
Foundation  
Program (PFP)

ELMAB3  $\leq 19^*$ :  
Direct-Entry-Scheme  
to Polytechnic  
Programme (DPP)

Place confirmed  
if met GPA

Polytechnic

Meet GPA

O-Level

ELMAB3  $\leq 19^{**}$ :

Progress to  
Sec 5N(A) to take  
GCE 'O' Level exam



4 N(T)

enter ITE for  
*Nitec* & *Higher Nitec*  
courses, which allows  
progression to *Higher Nitec* or polytechnics

\*Also met course-specific entry requirements.

\*\*Also obtained at least an N(A)-Level Grade 5 for all subjects used in the computation of ELMAB3.

# 1. Direct-to-Poly Programmes

## a. Polytechnic Foundation Programme (PFP)

PFP eligibility:

1.  $ELMAB3 \leq 12$  (excluding CCA points)
2. And at least Grade 3 for EL, MA, Relevant Subject + Grade 4 for two other Subjects
3. Report back to Sec 5 (2 Jan 2024)
4. Upon the release of O-level results in January, eligible students will be invited to apply for the PFP.



# 1. Direct-to-Poly Programmes

## b. Direct-Entry-Scheme to Polytechnic Programme (DPP)

DPP eligibility:

1. ELMAB3  $\leq 19$  (excluding CCA points)
2. At least Grade 4 for both EL & MA
3. Grade 5 for ALL ELMAB3 subjects
4. The application phase 18 to 21 Dec 2023 (5pm)
5. Once you accept a DPP offer, you need not continue with 5NA. If not successful, you have to return for Sec 5 in Jan 2024

### Advantage of choosing DPP over Sec 5N

Guaranteed placement in a related polytechnic course, if qualifying Grade Point Average (GPA) scores are met.





## 2. Promotion to Sec 5

Promotion to Sec 5 eligibility:

1. ELMAB3  $\leq 19$  points
2. Grade 5 for ALL ELMAB3 subjects
  - O-Level Exam is **more challenging** (greater depth & rigour)
  - Will require **significantly more effort & hard work** than 'N'-level examinations
3. Progression to JC/MI will require L1R5  $\leq 20$   
Polytechnics ELR2B2  $\leq 25$

Do take note that Poly place is not guaranteed unlike PFP and DPP.

Students who qualify for PFP/DPP are strongly advised to accept PFP/DPP over 5NA.



# 3. Progression to ITE

## Joint Intake Exercise 'N' (JIE 'N')

### For N(A) & N(T) students

Different Nitec courses have different entry requirements ranging from

- Completed GCE 'N' level
- 3 GCE 'N' level passes
- Aggregate is based on 4 subjects

**IMPORTANT:**

**Check the Cut-off-point** of the course you want before you apply

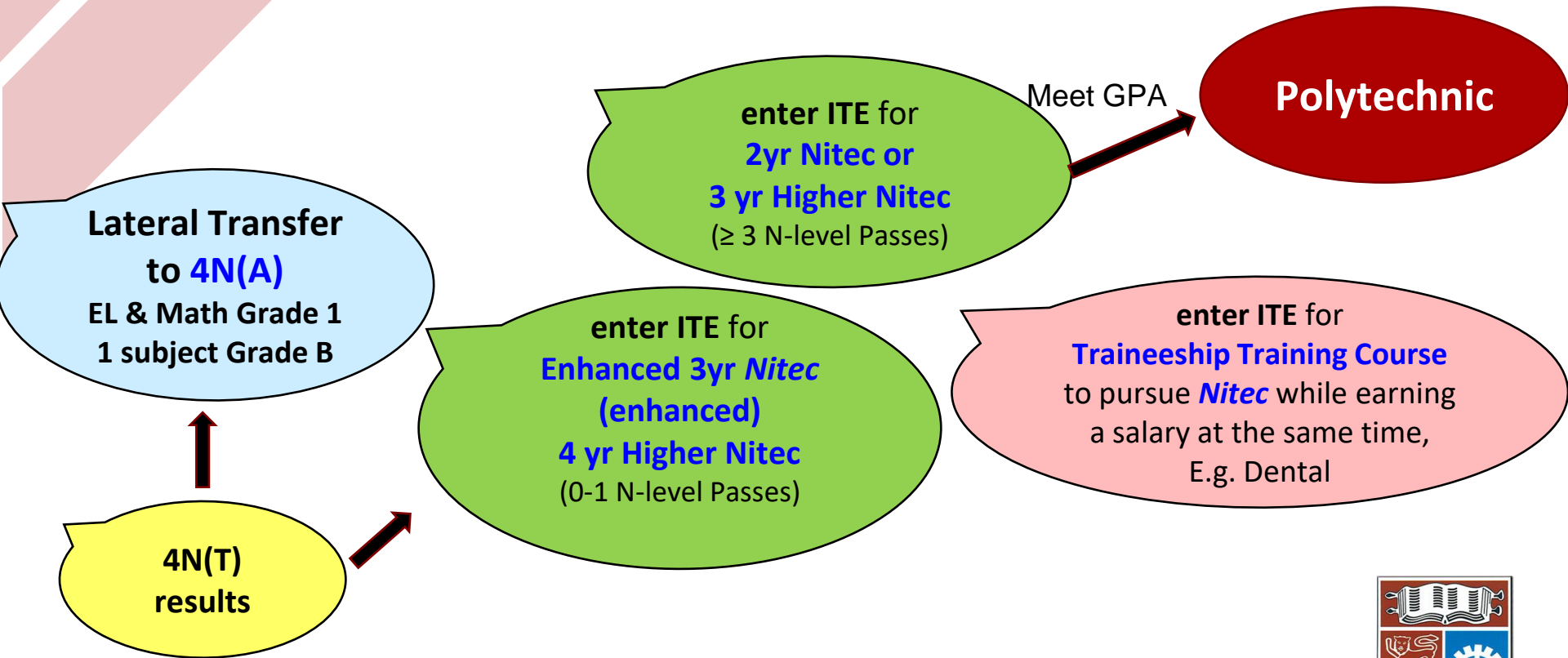
**\*\*** Meet entry criteria DOES NOT mean you will be allocated the course



**Specially**  
**For Secondary 4 students in**  
**Normal (Technical) course**



# Progression Pathway options for Sec 4N students



\*Also met course-specific entry requirements.

\*\*Progression requires you to learn well to attain the required GPA



# Important Information in JIE Booklet

(Please take time to refer to them)

1. 3yr Higher Nitec/ 2yr Nitec: Pages 7 – 43
1. DPP: Pages 44 – 68
1. Traineeship Training Course/System:  
Pages 69 - 89

